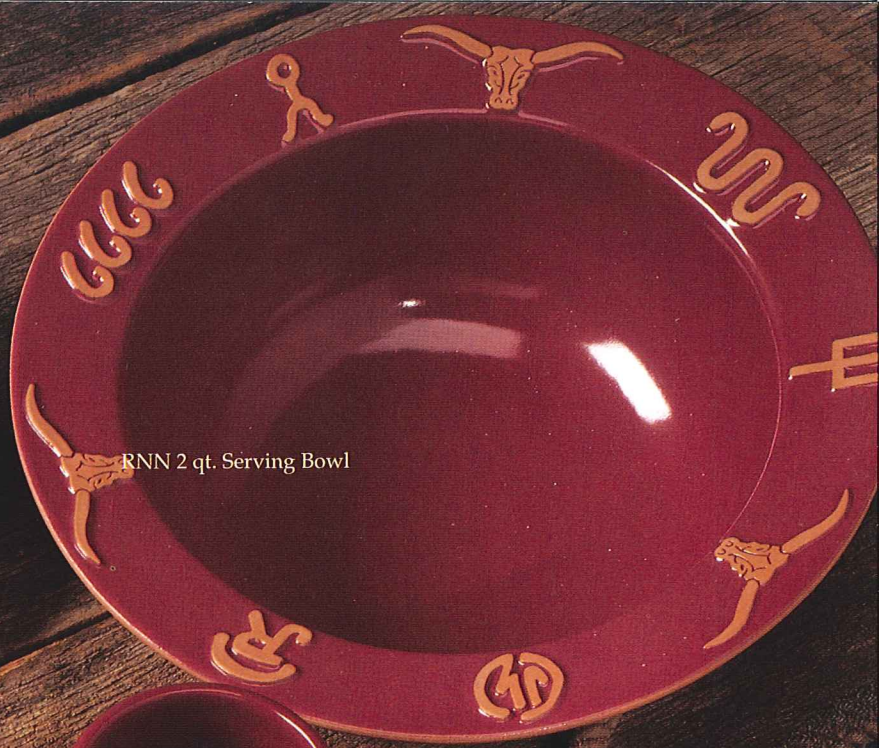


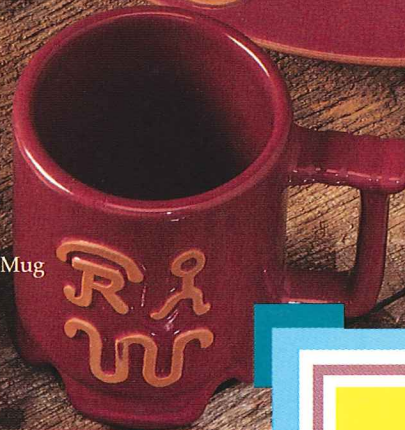
RNHD 10" Chip-N-Dip



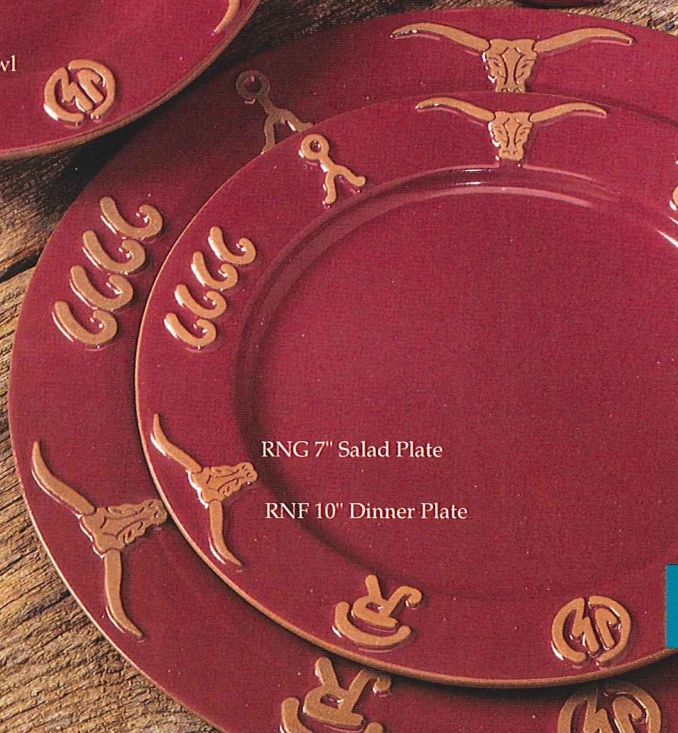
RNN 2 qt. Serving Bowl



RNXL 18 oz. Chili Bowl



RNC1 Ranch Mug



RNG 7" Salad Plate

RNF 10" Dinner Plate



Frankoma Ranch dinnerware's rich, traditional design transforms any home into a stately ranch house of the Old West.



The Frankoma Ranch Collection

Microwaveable, dishwasher safe and ovenproof.

Made in U.S.A.

FRANKOMA POTTERY

A Division of Frankoma Industries, Inc.
Box 789 • 2400 Frankoma Road
Sapulpa, Oklahoma 74067
918-224-5511 • 800-331-3650
Fax 918-227-3117



TBHD

TBN

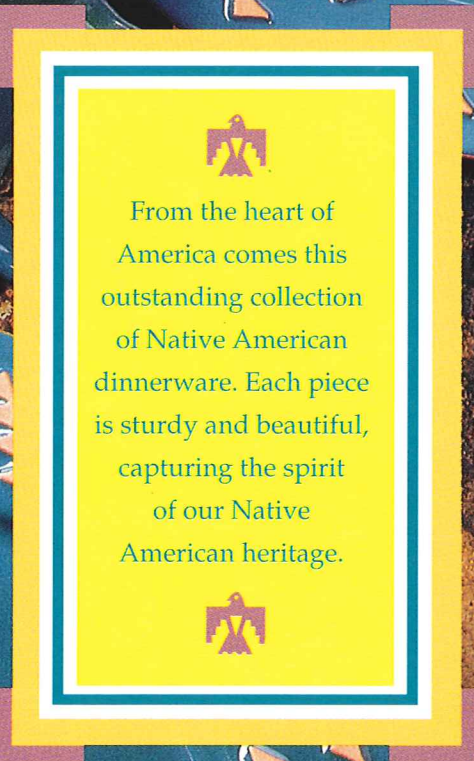
TBC1

TBXL

TBF



Available in black, cabernet, teal, white and navy.



From the heart of America comes this outstanding collection of Native American dinnerware. Each piece is sturdy and beautiful, capturing the spirit of our Native American heritage.

The Frankoma Native American Collection

Microwaveable, dishwasher safe and ovenproof.

Made in U.S.A.

FRANKOMA POTTERY

A Division of Frankoma Industries, Inc.
Box 789 • 2400 Frankoma Road
Sapulpa, Oklahoma 74067
918-224-5511 • 800-331-3650
Fax 918-227-3117

6TM- Teapot w/ Warmer



5MCD- Chip-n-Dip



819-12" Egg Plate



5FC- Chip Plate

246/W- Tureen w/ Warmer
247- Ladle for Soup or Punch



FBP-1- Cornbread Baker



809- Egg Plate

81- Pitcher, 91- Tray, 5LC- Juice Glass



224 Set- Stackable Bowls



4M- Mug



267- Loaf Pan



218- Scalloped Bowl



5CC- Punch Cups



4SC- Soup Cup
6P- Plater



242- Barn Dish



MCSF- Milk Can Salt & Pepper



6S/ST- Gravy Server w/ Tray



6J- Teapot, 50J/55J- Miniature Cream & Sugar
25J- Warm Rolls Tile, 25I- Warm Bread Tile



F30AB- Pitcher & Bowl



The Frankoma Gourmet Collection

Microwavable, Oven Proof, and Dishwasher Safe

FRANKOMA POTTERY

A Division of Frankoma Industries, Inc.
Box 789 • 2400 Frankoma Road
Sapulpa, Oklahoma 74067
918-224-5511 • 800-331-3650
FAX 918-227-3117 • Made in U.S.A.

The Frankoma Baking Collection

Microwavable,
Oven Proof, and
Dishwasher Safe

FRANKOMA POTTERY
A Division of Frankoma Industries, Inc.
Box 789 • 2400 Frankoma Road
Sapulpa, Oklahoma 74067
918-224-5511 • 800-331-3650
FAX 918-227-3117 • Made in U.S.A.

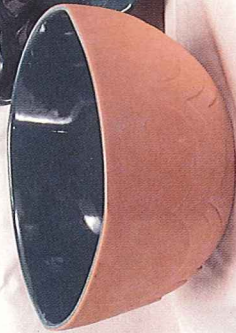
6U-Covered Bowl



227-Leaf Tray Casserole



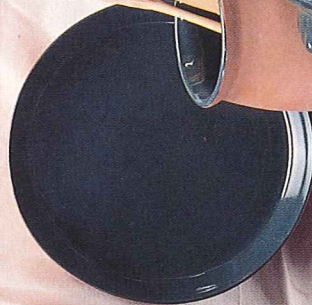
5N-Mixing Bowl



266-Biscuit Server



91-Baking Pan

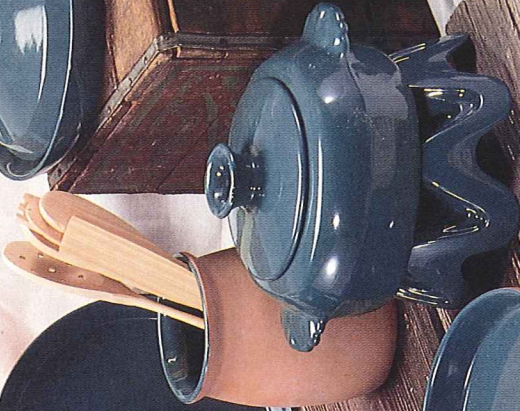


245-Baker



267-Loaf Pan

5V/W-Baker w/Warmer



S4 Spoon Jar



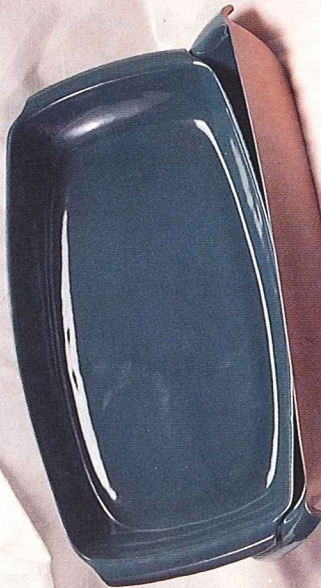
FBP-2 Omelette Server



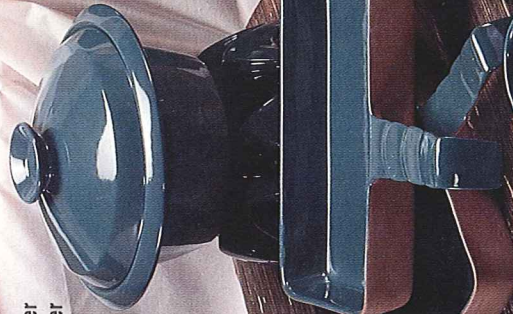
208-Duck Casserole



5P-Platter



6V/W-Baker w/Warmer



FBP-1 Cornbread Baker



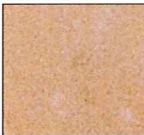
BP-Bean Pot



5B-Platter



Brown Satin



Black



Teal



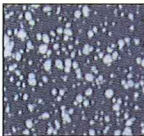
Navy Blue



Cabernet



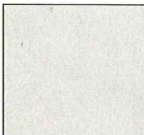
Country Blue



Desert Gold



Mountain Haze



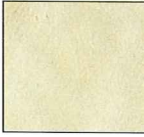
White



Mauve



Prairie Green





ACC1-Crawfish Mug

C20-Travel Mug

ARC1-Mug

FP1-Frankoma Mugs

M5/B-Drill Bit Mug

C15/B-Drill Bit Mug

CL-66-Route 66 Clock

5L-66-Route 66 Tumbler

C1-66-Route 66 Mug

Med-66-Route 66 Medallion

C15-66-Route 66 Drill Bit Mug

DTR-66-Route 66 Trivet

"Route 66" litho available on all Frankoma items.



45Sp-b-Texas Candy Dish

FBP-2-b-Oval Baker

4Y-b-Spoon Rest

TST-b-Texas State Trivet

DTR-b-Blue Bonnet Trivet

"Blue Bonnets" litho available on all Frankoma items.



LAP-LA Bake Pan

TXBPCD-TX Chip-n-Dip

TXBP-TX Bake Pan

MTXBP-Mini TX Bake Pan

ARB-AR Bake Pan

459-TX Candy Dish

TXBPRD-TX Relish Dish

TXBP/BP-TX w/ Bean Pot

OKBP-OK Bake Pan

461-OK Ash Tray

MOKBP-Mini OK Bake Pan

OKBP/BP-OK w/ Bean Pot

State Bake Pans are available in all Frankoma colors.

The Frankoma Gifts & Souvenir Items

Microwavable, Oven Proof, and Dishwasher Safe

FRANKOMA POTTERY

A Division of Frankoma Industries, Inc.
 Box 789 • 2400 Frankoma Road
 Sapulpa, Oklahoma 74067
 918-224-5311 • 800-331-3650
 FAX 918-227-3117 • Made in U.S.A.



7FS-9" Cherokee Alphabet Plate

KS1-9" Kansas Plate



(left) OFTR-6 1/2" Oklahoma Flag Trivet

(right) SCTR-6 1/2" Scissors Trivet



OK2-9" Sooner State Plate

OK1-9" Oklahoma Plate

TEX1-9" Texas State Plate



RT66-6 1/2" Route 66 Trivet

7TR-6 1/2" Cherokee Alphabet Trivet

OK3-6 1/2" Civilized Tribes Trivet



10TR-6 1/2" Iowa Trivet

LATR-6 1/2" Louisiana Trivet

ARTR-6 1/2" Arkansas Trivet



(left) LCTR-6 1/2" Crawfish Trivet

(right) ACTG-6 1/2" Acadien Trivet



94A-Creamer

94B-Sugar Bowl

94J-Teapot

94M-Mug

94C-Coffee Cup

C33-5" Boot Mug

383-Boot Bank

133-6 1/2" Boot Vase

134-4" Boot Vase

Wagon Wheels are available in Prairie Green and Gold.

433-Boot Bookends

118C - Comedy Mask



118T - Tragedy Mask



6-131-5" - Indian Chief



6-132 - Indian Maiden



102 - Coyote



105 - Squirrel



104-14" Madonna



123 - Bowl Maker



101-12" Indian Maiden



106 - Pony Tail Girl



114 - Seated Puma



116 - Reclining Puma



142 - Indian Chief



108 - Mother Bird & 109 - Baby Bird



Made in U.S.A.



CP92 - Christmas Plate "And He Called His Name Jesus"

GP92 - Elephant Mug



DKY92 - Donkey Mug



The Frankoma Collector Series

The original "Elephant Mug" was created for the National Republican Women's Club in 1968 and copyrighted by Frankoma in 1969. The "Donkey Mug" was created in 1975. The mugs are Frankoma stock items available during the dated year only. Each year is a different color. President's and Vice President's names on respective mugs in inaugural years only.

In 1965, the late John Frank, artist and founder of Frankoma Pottery, created the first annual Christmas plate made in America. The plates are based on the Christmas story and the life of Christ, inspiration for more art in all the various media than any subject in the history of the world. Eight and one half inches in diameter, the plates are done in a semi-translucent *DeJia Robbia* white glaze. The master mold was signed by Mr. Frank himself through 1973. Since 1974, the master mold is signed by his daughter, Jonece Frank. All plates are copyrighted and the master mold is destroyed on Christmas Eve. The edition is limited to that year. Past issues no longer available from factory.

The Frankoma Sculpture Collection

The Frankoma Southwest Collection

Microwavable,
Oven Proof, and
Dishwasher Safe

FRANKOMA POTTERY
A Division of Frankoma Industries, Inc.
Box 789 • 2400 Frankoma Road
Sapulpa, Oklahoma 74067
918-224-5511 • 800-331-3650
FAX 918-227-3117 • Made in U.S.A.



82T-Beverage Server

26LC-Goblet

91BP-Chip-n-Dip Plate

26S-Tortilla Warmer

M2-18oz. Stein

5QS-Macho Platter

81S-Fajita Susah

72T-Wine Cooler

133-Boot Vase

6P-Taco Plate
4SC-Chili Cup

5P/X-Platter Style
Chip-n-Dip

FBP1-Corncake Baker

24S-Fajita Holder

5NCD-Chip-n-Dip Bowl

FBP-2-Fajita Server

Brown Salin	Black	Teal	Navy Blue	Cabernet	Country Blue	Desert Gold	Mountain Haze	White	Mauve	Prairie Green
-------------	-------	------	-----------	----------	--------------	-------------	---------------	-------	-------	---------------



T7SP-
Simmer Pot

208-Duck
Planter

F39-Drapery Vase

F52-Pedestalled Um

71-Leaf-Handled Vase

177-
Planter

227-
Leaf Tray

F30AB-Pitcher & Bowl Set

228-Swan
Planter

234-
Freeform Bowl

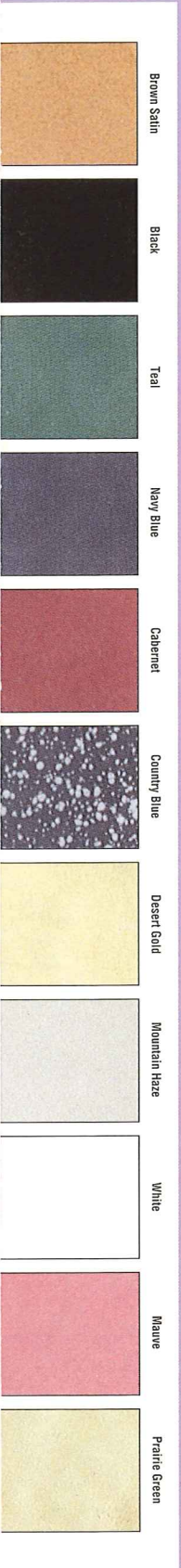
216-Black & White
Scalloped Bowl

272-Ringed
Cylinder Vase

225-Leaf Tray

226-
Leaf Tray

T10K(12") & T9 (7")
Shell Bowls



The Frankoma Fall Gift Collection

Microwavable,
Oven Proof, and
Dishwasher Safe

FRANKOMA POTTERY

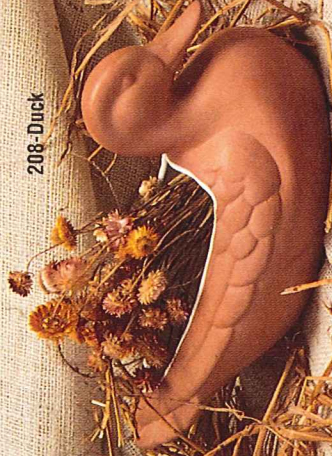
A Division of Frankoma Industries, Inc.
Box 789 • 2400 Frankoma Road
Sapulpa, Oklahoma 74067
918-224-5511 • 800-331-3650
FAX 918-227-3117 • Made in U.S.A.

Six pumpkin styles
to choose from!

212-Bowl



208-Duck



222-Cornucopia



PK02



PK01



PK05



PK03



PK06



PK04



The Frankoma Pumpkin Collection

Made in U.S.A.

FRANKOMA POTTERY

A Division of Frankoma Industries, Inc.
Box 789 • 2400 Frankoma Road

Sapulpa, Oklahoma 74067

918-224-5511 • 800-331-3650

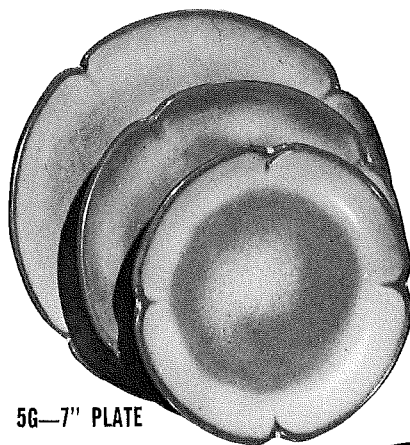
FAX 918-227-3117

THE PLAINSMAN COLLECTION



*5V—2 QT. BAKER/BEAN POT
*5V/W—BAKER/W WARMER SET

5F—10" PLATE

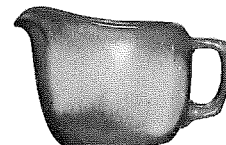


5G—7" PLATE



*5M—16 OZ. MUG

*5AB—CREAM & SUGAR SET



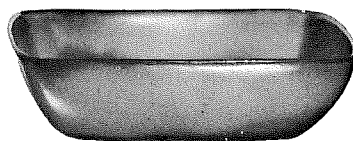
*5A—12 OZ. CREAMER



*5B—SUGAR WITH LID



*5W—3 QT. BAKER/BEAN POT
*5W/W—BAKER/W WARMER SET



*5NS—9" VEGETABLE



*5CC—5 OZ. TEACUP



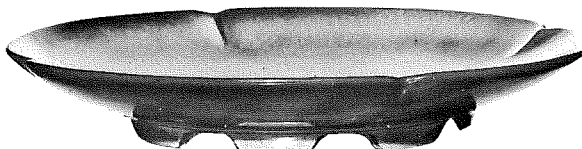
** 5C—CUP
5E—5 1/2" SAUCER



*5H—SALT & PEPPER



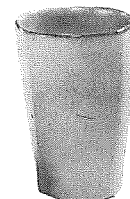
*5N—4 1/2" QT. BOWL



*5FC—15" CHOP PLATE



*5LC—6 OZ. JUICE



*5L—12 OZ. TUMBLER

COLORS AVAILABLE

- BROWN
- COUNTRY BLUE
- CABERNET
- GOLD
- GREEN
- MOUNTAIN HAZE
- MAUVE
- NAVY
- TEAL
- NAVY/TERRA COTTA
- TEAL/TC
- WHITE/TC

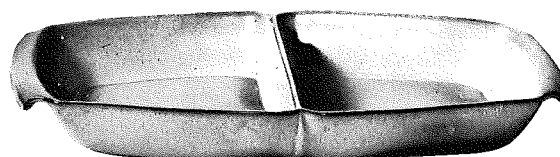


*5XL—20 OZ. BOWL
*5X—14 OZ. CEREAL

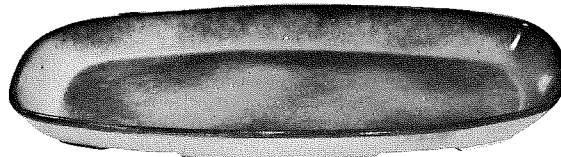


*5P—17" PLATTER

*5Q—13" PLATTER

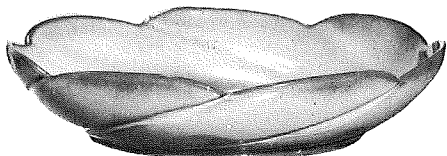


*5QD—13" DIVIDED BOWL



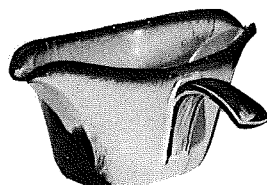
*5QS—13" PLATTER

*5PS—9" TRAY



*218—12" BOWL

*6P—11" PLATTER



*6S—TWO SPOUT GRAVY



*6T—6 CUP TEAPOT

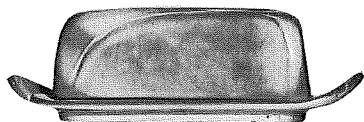


*6J—2 CUP TEAPOT

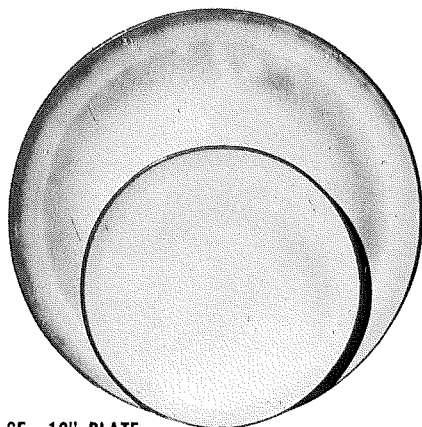
FRANKOMA POTTERY

A Division of Frankoma Industries, Inc.
 Box 789 • 2400 Frankoma Road
 Sapulpa, Oklahoma 74067
 918-224-5511 • 800-331-3650
 FAX 918-227-3117

THE WESTWIND COLLECTION



4K—BUTTER DISH



6F—10" PLATE
6G—7" PLATE



* 6B—SUGAR WITH LID

* 6AB—CREAM & SUGAR SET



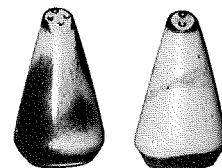
* 6A—9 OZ. CREAMER



* 6U—18 OZ. BAKER FOR TWO
A COVERED CANDY DISH



** 6C—CUP
6E—5" WELLED SAUCER



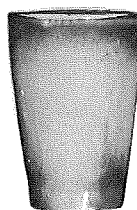
* 6H—SALT & PEPPER



* 6J—2 CUP TEAPOT



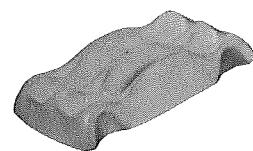
* 5LC—6 OZ. JUICE



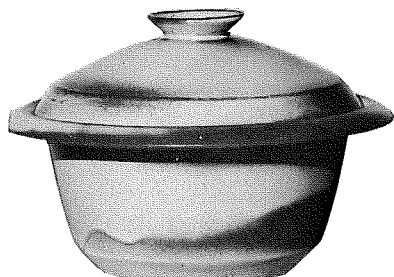
* 5L—12 OZ.
TUMBLER



* 81—1 QT. PITCHER



* 249 TACO HOLDER
BOXED 2 PER BOX



* 6V—2½ QT. BAKER
* 6V/W BAKER & WARMER SET



* 6T—6 CUP TEAPOT



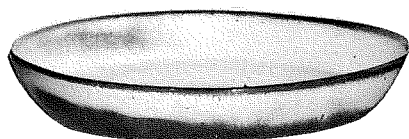
* 80—2 QT. PITCHER

COLORS AVAILABLE

- BLACK
- COUNTRY BLUE
- CABERNET
- MOUNTAIN HAZE
- MAUVE
- NAVY
- TEAL
- WHITE
- BLACK/TC
- NAVY/TC
- TEAL/TC
- WHITE/TC



* 5QS—13" STEAK PLATE (SHALLOW PLATTER)
* 6P—11" STEAK PLATE
* 5PS—9" TRAY



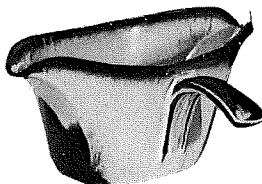
* 91—10" BAKING DISH



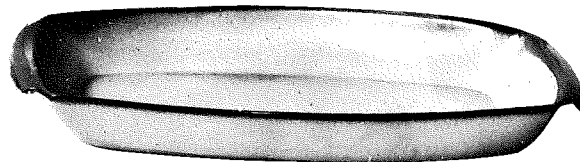
* 242 CORN DISH
Solid Colors only-No T.C.



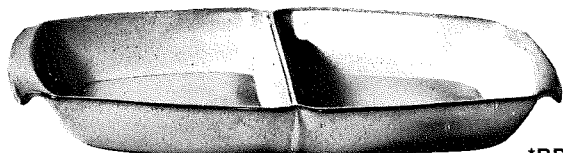
* 6N—1 QT. BOWL



* 6S—2 SPOUT GRAVY



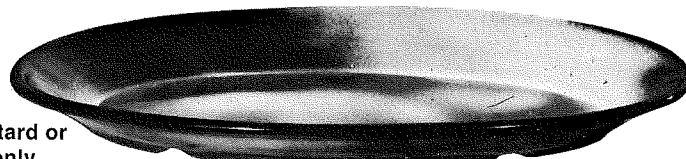
* 5P—17" DEEP PLATTER * 5Q—13" DEEP PLATTER



* 5QD—13" DIVIDED BOWL

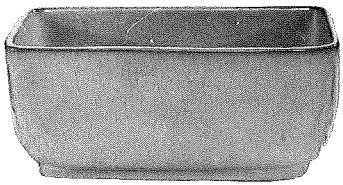


*BP-6 oz. Bean Pot, Custard or
chip-dip- Solid colors only
NO Terra Cotta



* TP—17" OVAL PLATTER

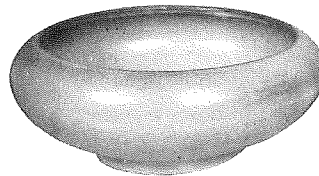
Appropriate Containers for Flower Arrangements and Planters



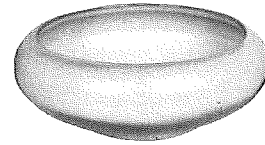
14—8" PLANTER



177—5½" SWIRL PLANTER



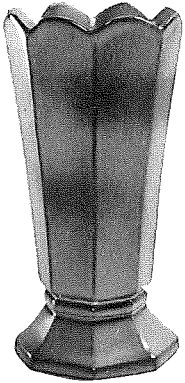
212—8" ROUND BOWL



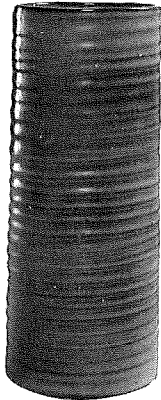
212-2—6½" ROUND BOWL



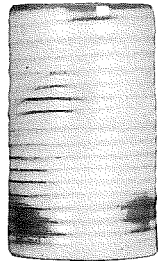
212-4- 5" ROUND BOWL -



64—9½" OCTAGONAL VASE



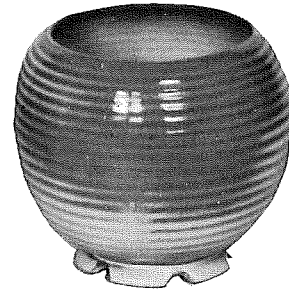
72—10" RINGED CYLINDER VASE



172—6½" RINGED CYLINDER VASE



272—4" RINGED CYLINDER VASE

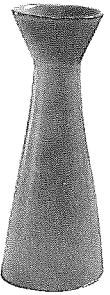


70-A—7" RINGED JARDINIERE



70-B—5½" RINGED JARDINIERE

BUD VASES



28—6½"



38—6"



22—7" FOOTED ROUND VASE



M2—6"—18 OZ. MUG

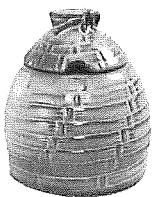


5M—5½"—16 OZ. MUG



4M—4½"—18 OZ. MUG

HONEY JUGS — SYRUP PITCHERS — FLOWER CONTAINERS



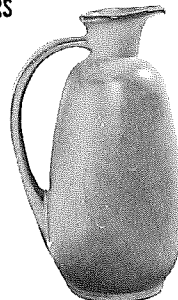
803—HONEY JAR W/LID



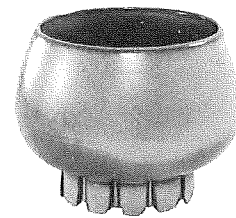
838—10 OZ. PITCHER



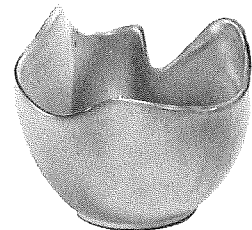
833—24 OZ. PITCHER



835—24 OZ. PITCHER



235—6" FLOWER ARRANGER



F29—6" DRAPERY VASE

"MUGS" for coffee, tea, milk, soup, soda. YOU NAME IT!



C1



C2



C3



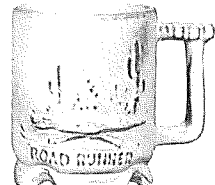
C5



C9



C18—SCISSORTAIL MUG

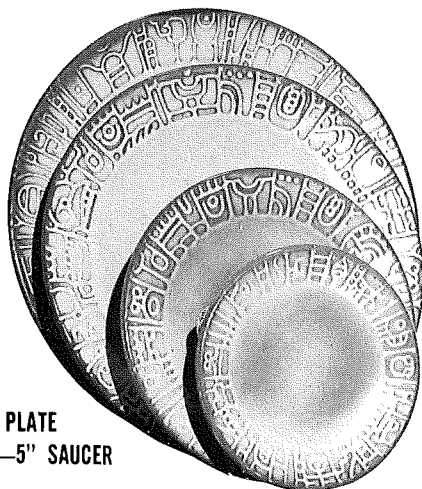


C19—ROAD RUNNER 12 OZ. MUG

THE AZTEC COLLECTION



7V—2 QT. BAKER/BEAN POT
7V/W—BAKER & WARMER, SET

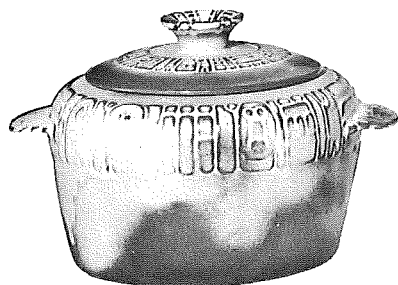


7FL—10" PLATE

7G—7" PLATE
7E—5" SAUCER



7D—2 QT. PITCHER



7W—3 QT. BAKER/BEAN POT
7W/W—BAKER & WARMER, SET



7B—SUGAR
WITH LID



7A—6 OZ.
CREAMER

7AB—CREAM & SUGAR SET



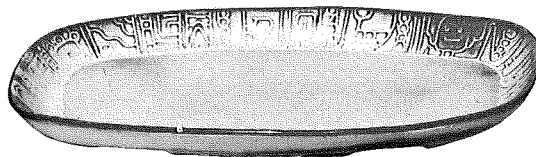
7C—CUP



7M—14 OZ. MUG



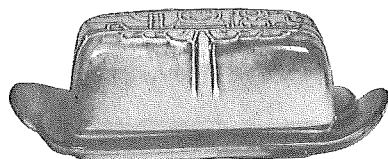
7H—SALT & PEPPER



7QS—13" STEAK PLATTER (SHALLOW PLATTER)



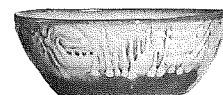
7XO—8 OZ. FRUIT



7K—BUTTER DISH



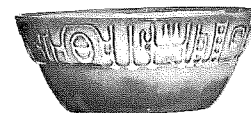
7Q—13" DEEP PLATTER



7X—14 OZ. CHILI-SOUP



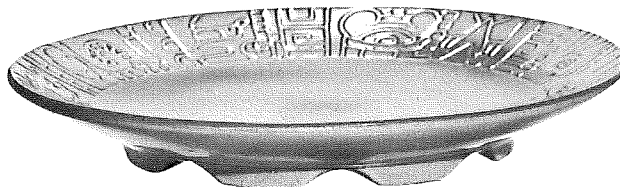
7PS—9" TRAY



7XL—20 OZ. SALAD



7J—2 CUP TEAPOT



7FC—15" CHOP PLATE

COLORS AVAILABLE

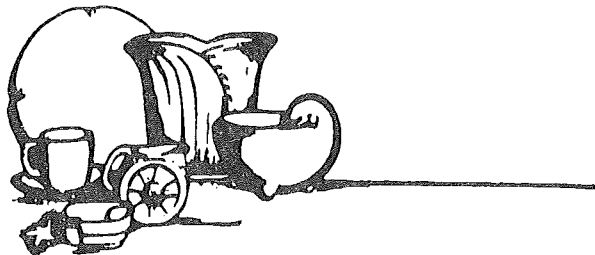
- GOLD
- GREEN
- WHITE
- NAVY/TERRA COTTA
- TEAL/TC
- WHITE/TC



7T—6 CUP TEAPOT

FRANKOMA POTTERY

A Division of Frankoma Industries, Inc.
 Box 789 • 2400 Frankoma Road
 Sapulpa, Oklahoma 74067
 918-224-5511 • 800-331-3650
 FAX 918-227-3117



FRANKOMA POTTERY

P. O. BOX 789 • 2400 FRANKOMA ROAD
SAPULPA, OKLAHOMA 74067
(918) 224-5511 • (800) 331-3650 • Fax: (918) 227-3117

FRANKOMA POTTERY

RETAIL PRICES

Effective June, 1992

dinnerware
sculpture
artware

for those who like nice things _____

A Division of Frankoma Industries, Inc.

SECTION ANSWERS

1. 100
2. 100

ITEM	DESCRIPTION	PRICE	ITEM	DESCRIPTION	PRICE
PLAINSMAN COLLECTION			WESTWIND COLLECTION, CONTINUED:		
5AB	CREAM & SUGAR SET	14.00	6E	5" WELLED SAUCER	4.80
5A	12 OZ. CREAMER	6.00	6F	10" PLATE	8.50
5B	SUGAR BOWL /W LID	8.00	6G	7" SALAD PLATE	5.50
5B-L	LID ONLY	3.00	6H	SALT & PEPPER SET	9.00
5C	COFFEE CUP	6.00	6J	2 CUP TEAPOT /W LID	10.00
		5.50/8	6J-L	LID ONLY	4.00
5CC	5 OZ. TEACUP	5.00	6J-SET	TEA SET	27.90
		4.80/8	6LS	45 PIECE DINNERWARE SET	250.00
5DTS	DELUXE STARTER SET	140.00		OPEN STOCK PRICE	279.40
	OPEN STOCK PRICE	158.20	6N	1 QT. BOWL	8.00
5E	5" SAUCER	4.80			7.60/4
5F	10" DINNER PLATE	8.50	6P	11" PLATTER/TRAY	7.90
5FC	15" CHOP PLATE	38.00			7.50/12
5G	7" SALAD PLATE	5.50	6S	TWO SPOUT GRAVY BOAT	11.00
5H	SALT & PEPPER SET	9.00			10.50/4
5L	12 OZ. TUMBLER	6.00	6S/ST	GRAVY BOAT & TRAY	16.50
5LC	6 OZ. JUICE TUMBLER	5.00	6T	6 CUP TEAPOT / W LID	15.00
5LC-SET	JUICE SET	42.00	6T-L	LID ONLY	6.00
5LS	45 PIECE DINNERWARE SET	250.00	6TS	20 PIECE STARTER SET	115.00
	OPEN STOCK PRICE	279.40		OPEN STOCK PRICE	121.25
5M	16 OZ. MUG	8.00	6U	18 OZ. BAKER	13.00
5N	4 1/2 QT. BOWL	28.00			12.30/4
5NC/D	CHIP & DIP SET	34.00	6U-L	LID ONLY	5.00
5NS	9" SQUARE BOWL	8.00	6V	2 1/2 QT. BAKER /W LID	24.00
		7.60/4	6V-L	LID ONLY	8.00
5P	17" LARGE PLATTER	29.00	6V/W	2 1/2 QT. BAKER /W WARMER	32.50
5PS	9" PLATTER/TRAY	6.50	6X	14 OZ. BOWL	5.50
5Q	13" PLATTER	15.00			5.25/12
5QS	13" STEAK PLATTER	15.00	AZTEC COLLECTION		
5TS	20 PIECE STARTER SET	115.00	7AB	CREAM & SUGAR SET	14.00
	OPEN STOCK PRICE	121.25	7A	6 OZ. CREAMER	6.00
5V	2 QT. BAKER	18.00	7B	SUGAR BOWL /W LID	8.00
5W	3 QT. BAKER	24.00	7B-L	LID ONLY	3.00
5V/W	2 QT. BAKER /W WARMER	27.50	7C	COFFEE CUP	6.00
5W/W	3 QT. BAKER /W WARMER	32.50			5.50/8
5V-L	LID ONLY (ALSO FITS 5W)	6.00	7D	2 QT. PITCHER	15.00
5X	14 OZ. BOWL	5.50	7DTS	DELUXE STARTER SET	140.00
		5.25/12		OPEN STOCK PRICE	158.20
5XL	20 OZ. BOWL	6.00	7E	5" SAUCER	4.80
WESTWIND COLLECTION			7FC	15" CHOP PLATE	38.00
6AB	CREAM & SUGAR SET	14.00	7FL	10" DINNER PLATE	8.50
6A	9 OZ. CREAMER	6.00	7G	7" SALAD PLATE	5.50
6B	SUGAR BOWL /W LID	8.00	7H	SALT & PEPPER SET	9.00
6B-L	LID ONLY	3.00	7J	2 CUP TEAPOT	10.00
6C	COFFEE CUP	6.00	7J-L	LID ONLY	4.00
		5.50/8	7K	BUTTER DISH	10.00
6DTS	DELUXE STARTER SET	140.00	7K-B	BUTTER DISH BOTTOM ONLY	5.00
	OPEN STOCK PRICE	158.20	7K-T	BUTTER DISH TOP ONLY	5.00
			7LS	45 PIECE DINNERWARE SET	250.00
				OPEN STOCK PRICE	279.40

ITEM	DESCRIPTION	PRICE	ITEM	DESCRIPTION	PRICE
AZTEC COLLECTION, CONTINUED:			NATIVE AMERICAN COLLECTION CONT:		
7M	14 OZ. MUG	9.00	TBG	7" SALAD PLATE	7.50
7N	1 QT. BOWL	8.00	TBXL	18 OZ. CHILI BOWL	9.50
		7.60/4	TBC1	THE NATIVE AMERICAN MUG	9.00
7PS	9" PLATTER/TRAY	6.50	TBHD	10" CHIP-N-DIP	22.00
7Q	13" PLATTER	15.00	TBN	2 QT. VEGETABLE BOWL	25.00
7QS	13" STEAK PLATTER	10.00	TBTS	SERVICE SET FOR FOUR:	158.00
7T	6 CUP TEAPOT	15.00	TBLS	SERVICE SET FOR EIGHT:	300.00
7T-L	LID ONLY	6.00	TBDS	DELUXE SERVICE FOR EIGHT:	340.00
7TS	20 PIECE STARTER SET	115.00			
	OPEN STOCK PRICE	121.20			
7V	2 QT. BAKER /W LID	18.00		SEAFARE COLLECTION	
7V-L	LID ONLY	6.00	SFF	10" DINNER PLATE	16.00
7V/W	2 QT. BAKER /W WARMER	27.50	SFG	7" SALAD PLATE	9.00
7W	3 QT. BAKER /W LID	24.00	SFXL	18 OZ. CHOWDER BOWL	12.00
7W/W	3 QT. BAKER /W WARMER	32.50	SFHD	10" HORS D'OEUVRE	25.00
7X	14 OZ. BOWL	5.50	SFC1	SEAFARE (CRAB)MUG	9.50
		5.25/12	SFN	2 QT. VEGETABLE BOWL	25.00
7XO	8 OZ. FRUIT BOWL	5.00			
		4.50/12		ACADIEN CLASSIQUE COLLECTION	
	WAGON WHEEL COLLECTION		ACF	10" DINNER PLATE	16.00
94AB	CREAM & SUGAR SET	20.00	ACG	7" SALAD PLATE	9.00
94A	CREAMER ONLY	8.00	ACXL	18 OZ. GUMBO BOWL	12.00
94B	SUGAR BOWL /W LID	12.00	ACHD	10" HORS D'OEUVRE	24.00
94B-L	LID ONLY	6.00	ACC1	ACADIEN CLASSIQUE MUG	9.50
94C	COFFEE CUP	8.00	ACN	2 QT. VEGETABLE BOWL	25.00
94D	2 QT. PITCHER	24.00	ACBT	BREAD TRAY	16.00
94E	5" SAUCER	6.00	ACTG	TRIVET	11.00
94FL	10" DINNER PLATE	14.00	CFC	CRAWFISH CADDY	12.00
94G	7" SALAD PLATE	8.00			10.00/12
94H	SALT & PEPPER SET	14.00	ACDS	DEMITASSE SET	40.00
94J	2 CUP TEAPOT /W LID	15.00	ACCS	COFFEE SERVICE SET	34.60
94J-L	LID ONLY	6.00	ACTS	TUREEN SET	45.50
94M	16 OZ. MUG	12.00	T7SP	SIMMER POT	12.00
94Q	13" PLATTER	24.00			
94X	14 OZ. BOWL	8.00		GOURMET COLLECTION	
	RANCH COLLECTION		4M	18 OZ. MUG	8.00
RNF	10" DINNER PLATE	13.50	5NC/D	CHIP-N-DIP	34.00
RNG	7" SALAD PLATE	7.50	224-SET	STACKABLE BOWL SET	25.00
RNXL	18 OZ. CHILI BOWL	9.50	F30AB	PITCHER & BOWL	14.40
RNC1	THE RANCH MUG	9.00	6T/W	TEAPOT /W WARMER	24.60
RNHD	10" CHIP-N-DIP	22.00	FBP1	CORNBREAD BAKER	16.00
RNN	2 QT. VEGETABLE BOWL	25.00	5FC	CHOP PLATE	38.00
RNTS	SERVICE SET FOR FOUR:	158.00	250	WARM ROLLS TILE	5.00
RNLS	SERVICE SET FOR EIGHT:	300.00	251	WARM BREAD TILE	5.00
RNDS	DELUXE SERVICE FOR EIGHT:	340.00	242	CORN DISH	5.00
	NATIVE AMERICAN COLLECTION		809	9 1/2" EGG PLATE	19.00
TBF	10" DINNER PLATE	13.50	819	12" EGG PLATE	25.00
			218	SCALLOPED BOWL	13.50
			267	LOAF PAN	15.00
			6S/ST	GRAVY SERVER /W TRAY	16.50
			4Y	SPOON REST	5.00

ITEM	DESCRIPTION	PRICE	ITEM	DESCRIPTION	PRICE
GOURMET COLLECTION CONTINUED:			SCULPTURE COLLECTION		
MC/SP	MILK CAN SALT & PEPPER SET	10.00	101	12" INDIAN MAIDEN	12.00
81	1 QT. PITCHER	12.00	102	12" COYOTE	12.00
5LC	6 OZ. JUICE CUP	5.00	103	MARE & COLT	12.00
91	10" TRAY	10.00	104	14" MADONNA	19.00
4SC	11 OZ. SOUP CUP	6.30	105	SQUIRREL	8.00
6P	11" PLATTER	7.90	123	BOWL MAKER	12.00
6J	2 CUP TEAPOT	10.00	6-131	5" INDIAN CHIEF	6.00
504/553	MINIATURE CREAM & SUGAR	10.00	6-132	5" INDIAN MAIDEN	6.00
246/W	SOUP TURBEN /W WARMER	34.00	118C	COMEDY MASK	9.00
247	LADLE FOR SOUP OR PUNCH	10.00	118T	TRAGEDY MASK	9.00
BAKING COLLECTION			106	PONY TAIL GIRL	30.00
267	LOAF PAN	15.00	108	MOTHER BIRD	6.50
5N	4 1/2 QT. MIXING BOWL	28.00	109	BABY BIRD	6.50
266	BISCUIT SERVER	16.50	114	SEATED PUMA	12.00
FBP1	CORNBREAD SERVER	16.00	116	RECLINING PUMA	15.00
SJ	SPOON JAR	11.00	142	INDIAN CHIEF	12.00
FBP2	OMELETTE SERVER	16.00	CP92	CHRISTMAS PLATE 1992	19.00
227	17" LEAF TRAY CASSEROLE	25.00	DKY92	DONKEY MUG	9.00
5V/W	2 QT. BAKER /W WARMER	27.50	GOP92	ELEPHANT MUG	9.00
4W/W	3 QT. BAKER /W WARMER	32.50	GIFT & SOUVENIR COLLECTION		
6V	2 1/2 QT. BAKER	24.00	C20	TRAVEL MUG	8.00
91	10" TRAY	10.00	ACC1	CRAWFISH MUG	9.50
BP	6 OZ. BEAN POT	5.00	ARC1	ARKANSAS RAZORBACK MUG	6.00
5P	17" PLATTER	29.00	M5	DRILL BIT MUG	10.00
5Q	13" PLATTER	15.00	459P-B	TEXAS CANDY DISH	8.50
208	DUCK CASSEROLE	12.50	4Y-B	SPOON REST	8.00
245	2 QT. BAKER /W LID	18.00	TST-B	TEXAS STATE TRIVET	9.00
6U	18 OZ. COVERED BOWL	13.00	DTR-B	BLUEBONNET TRIVET	7.50
SOUTHWEST COLLECTION			FBP2-B	OVAL BAKER	19.00
5NC/D	CHIP-N-DIP SET	34.00	MTXBP	MINI TEXAS BAKE PAN	9.00
72T	WINE COOLER	9.00	TXBP	TEXAS BAKE PAN	11.50
266	TORTILLA WARMER	16.50	459	CANDY DISH	5.50
6P	TACO PLATE	7.90	TXBPCD	TEXAS CHIP-N-DIP	12.00
4SC	CHILI CUP	6.30	TXBPRD	TEXAS RELISH DISH	12.50
M2	18 OZ. STEIN	8.00	TXBP/BP	TEXAS /W BEAN POT	17.50
133	BOOT VASE	7.50	ARBP	ARKANSAS BAKE PAN	11.50
91/BP	CHIP-N-DIP PLATE	15.00	LABP	LOUISIANA BAKE PAN	8.00
5QS	NACHO PLATTER	10.00	OKBP	OKLAHOMA BAKE PAN	11.50
818	FAJITA SUSAN	34.00	MOKBP	MINI OKLAHOMA BAKE PAN	9.00
249	TACO HOLDER	7.50	OKBP/BP	OKLAHOMA /W BEAN POT	17.50
82T	BEVERAGE SERVER	25.00	C1-R66	ROUTE 66 DECAL MUG	9.50
FBP2	FAJITA SERVER	16.00	5L-R66	ROUTE 66 TUMBLER	9.00
FBP1	CORNBREAD BAKER	16.00	MED-R66	ROUTE 66 MEDALLION	7.00
26LC	GOBLET	6.00	CL-R66	ROUTE 66 CLOCK	33.00
265P	3 1/2" COASTER	4.20	C15-R66	ROUTE 66 DRILL BIT MUG	11.00
5P/X	PLATTER STYLE CHIP-N-DIP	35.50	DTR-66	ROUTE 66 DECAL TRIVET	7.50
			FPC1	FRANKOMA POTTERY MUG	9.00
			C15	DRILL BIT MUG	8.00

ITEM	DESCRIPTION	PRICE	ITEM	DESCRIPTION	PRICE
GIFT & SOUVENIR COLLECTION CONTINUED:			FALL COLLECTION CONTINUED:		
461	OKLAHOMA ASHTRAY	5.50	T7SP	4 1/2" SIMMER POT	12.00
OK-1	9" OKLAHOMA STATE PLATE	7.00	T10	12" SHELL CLAW BOWL	28.00
OK2	9" SOONER STATE PLATE	7.00	T9	7" SHELL CLAW BOWL	9.00
TEX-1	9" TEXAS STATE PLATE	7.00	OTHER GIFTWARE (BY ITEM #)		
KS-1	KANSAS STATE PLATE	7.00	BP	6 OZ. BEAN POT/CUSTARD	5.00
7FS	CHEROKEE ALPHABET PLATE	7.00			9.70/12
7TR*	CHEROKEE ALPHABET TRIVET	5.90	BSC1	BASS MUG (HDI)	9.50
TR66*	HISTORIC ROUTE 66 TRIVET	5.90			9.00/12
OK3*	5 CIVILIZED TRIBES TRIVET	5.90	CBTR	COWBOY TRIVET	5.90
OFTR*	OKLAHOMA FLAG TRIVET	5.90			5.50/6
SCTR*	SCISSORTAIL TRIVET	5.90	CL	CLOCK	30.00
IOTR*	IOWA STATE TRIVET	5.90	C1*	COFFEE MUG	6.50
LATR*	LOUISIANA STATE TRIVET	5.90	C1R	ROADRUNNER MUG	6.80
ARTR*	ARKANSAS STATE TRIVET	5.90	C2*	COFFEE MUG	6.50
LCTR*	CRAWFISH TRIVET	5.90	C3*	COFFEE MUG	6.50
ACTG	ACADIEN CLASSIQUE TRIV	11.00	C5*	COFFEE MUG	6.50
	ALL TRIVETS 5.50/6		C9	COFFEE MUG	6.50
			C18	SCISSORTAIL MUG	6.80
	THE PUMPKIN COLLECTION		C19*	COFFEE MUG	6.50
PK01	5" ROUND SET OF 6 PUMPKINS	57.00	C20	TRAVEL MUG	8.00
PK02	7" ROUND SET OF 6 PUMPKINS	90.00	C33	BOOT MUG	6.80
PK03	5" ON-SIDE SET OF PUMPKINS	78.00	* ALL MUGS MARKED WITH AN ASTERIK MAY		
PK04	6" ROUND SET OF 6 PUMPKINS	69.00	BE PURCHASED @ 6.00/12		
PK05	7" ROUND SET OF 6 PUMPKINS	90.00	DRC1	DEER MUG (HDI)	9.50
PK06	6" ON-SIDE SET OF PUMPKINS	90.00			9.00/12
PK07	ASSORTED SET OF 6 PUMPKINS	79.00	DTR	PLAIN TRIVET	5.90
	** SOLD IN CASES OF SIX ONLY				5.50/6
			F29	6" DRAPERY VASE	7.50
	THE FALL COLLECTION		F30A	5 1/2" PITCHER	8.40
234	7 1/2" FREEFORM VASE	8.00	F30AB	PITCHER & BOWL SET	14.40
114	SEATED PUMA	12.00	F30B	7" BOWL	6.00
116	RECLINING PUMA	15.00	F52	7" PEDESTALLED URN	9.00
218	12" SCALLOPED BOWL	13.50	FLTR	AMERICAN FLAG TRIVET	5.90
F52	7" PEDESTALLED URN	9.00			5.50/6
272	4" CYLINDER VASE	5.00	LABP	LOUISIANA BAKE PAN	8.00
177	4 3/4" SWIRL PLANTER	5.00	LATR	LOUISIANA TRIVET	5.90
FS	FRANKOMA SIGN	18.00			5.50/6
F29	6" DRAPERY VASE	7.50	LCTR	CRAWFISH TRIVET	5.90
225	7" LEAF TRAY	6.00			5.50/6
226	11" LEAF TRAY	11.00	M2	18 OZ. STEIN	8.00
227	17" LEAF TRAY	25.00	M5	18 OZ. DRILL BIT MUG	10.00
71	10" LEAF HANDLED VASE	20.00	MC/SP	MILKCAN SALT & PEPPER	10.00
F30AB	PITCHER & BOWL SET	14.40	MTXBP	9" MINI BAKE PAN	9.00
208	12" MALLARD PLANTER	12.50	IOTR	IOWA STATE TRIVET	5.90
228	8" SWAN PLANTER	10.00			5.50/6
108	MOTHER BIRD	6.50	OFTR	OKLAHOMA FLAG TRIVET	5.90
109	BABY BIRD	6.50			5.50/6

ITEM	DESCRIPTION	PRICE	ITEM	DESCRIPTION	PRICE
OTHER GIFTWARE (BY ITEM #) CONTINUED:			OTHER GIFTWARE (BY ITEM #) CONTINUED:		
OKBP	11 1/2" OKLAHOMA BAKE PAN	11.50	23A	6" FOOTED SQUARE VASE	8.00
OKC1	OKLAHOMA MUG (HDI)	9.00	26C	COFFEE CANISTER	20.00
OKTR	OKLAHOMA TRIVET (HDI)	7.90	26C-L	LID ONLY	6.00
OK-1	OKLAHOMA PLATE	7.00	26F	FLOUR CANISTER	29.00
OK2	SOONER STATE PLATE	7.00	26F-L	LID ONLY	6.00
OK3	5 TRIBES TRIVET	5.90	26G	SUGAR/GREASE	15.00
		5.50/6	26G-L	LID ONLY	6.00
PHC1	PHEASANT MUG (HDI)	9.50	26GC	GREASE CONT. /W STRAINER	23.00
		9.00/12	26GC-L	LID ONLY	6.00
SCTR	SCISSORTAIL TRIVET	5.90	26H	SALT & PEPPER SET	10.00
		5.50/6	26LC	6 OZ. GOBLET	6.00
SJ	SPOON JAR	11.00	26S	SUGAR CANISTER	23.00
TEX-1	TEXAS SOUVENIR PLATE	7.00	26S-L	LID ONLY	6.00
T7	3 1/2" COCONUT PLANTER	5.50	26-SET	4 PIECE CANISTER SET	85.00
T7SP	4 1/2" SIMMER POT	12.00	26T	TEA CANISTER	17.00
T9	7" CLAW SHELL BOWL	9.00	26T-L	LID ONLY	6.00
T10	12" SHELL CLAW BOWL	28.00	28	6 1/2" BUD VASE	5.00
TP	17" OVAL PLATTER	29.00	37	4" HEXAGONAL PLANTER	5.00
TST	TEXAS TRIVET	6.00	38	6" BUD VASE	5.00
TXBP	11" TEXAS BAKE PAN	11.50	40A	4" PITCHER	7.50
TXBPCD	11" CHIP-N-DIP	12.00	40AB	PITCHER & BOWL SET	12.00
TXBPRD	11" RELISH DISH	12.50	40B	5" BOWL	5.00
V14	VASE	30.00	64	9 1/2" OCTAGONAL VASE	10.00
WA1	8" WARMER FOR BAKERS	10.00	66C1	ROUTE 66 MUG (HDI)	9.50
WA3	6" WARMER FOR 18 OZ BAKER	7.00	70-A	7" RINGED JARDINIERE	14.00
WDC1	WOOD DUCK MUG (HDI)	9.50	70-B	5 1/2" RINGED JARDINIERE	10.00
		9.00/12	71	10" LEAF HANDLED VASE	20.00
1C	3 OZ. MINI MUG	4.00	72	10" CYLINDER VASE	10.00
1T	TOOTHPICK HOLDER	3.50	72-SET	PASTA CANISTER SET	36.00
4D	2 QT. PITCHER	18.00		LID(S) ONLY FOR PASTA SET	6.00
4H	SALT & PEPPER SET	9.00	72T	WINE COOLER	9.00
4K	BUTTER DISH	10.00	80	2 QT. PITCHER	18.50
4K-B	BOTTOM ONLY	6.00			18.00/4
4K-T	TOP ONLY	6.00	81	1 QT. PITCHER	12.00
4M	18 OZ. MUG	8.00	82	CARAFE & LID	25.00
4SC	11 OZ. SOUP CUP	6.30	82-L	LID ONLY	6.00
		6.00/12	82-SET	6 CUP CARAFE SET	32.00
4V	2 QT. BAKER	18.00	82T	BEVERAGE SERVER	25.00
4V-L	LID ONLY	6.00	82-W	WARMER FOR CARAFE	8.00
4V/W	2 QT. BAKER /W WARMER	27.50	91	10" BAKE DISH	10.00
4W	3 QT. BAKER	24.00	91/BP	SALSA CHIP-N-DIP	15.00
4W/W	3 QT. BAKER /W WARMER	32.50	94TR	ROOSTER TRIVET	5.90
4X	14 OZ. CEREAL BOWL	5.50			5.50/6
		5.25/12	101	12" INDIAN MAIDEN	12.00
4Y	SPOON HOLDER	5.00	102	12" COYOTE	12.00
7FS	CHEROKEE ALPHABET PLATE	7.00	103	MARE & COLT	12.00
7TR	CHEROKEE ALPHABET TRIVET	5.90	104	14" INDIAN MAIDEN	19.00
		5.50/6	105	6" SQUIRREL	8.00
8TR	BIRD TRIVET	5.90	106	PONY TAIL GIRL	30.00
		5.50/6	108	MOTHER BIRD	6.50
14	8" OBLONG PLANTER	8.00	109	BABY BIRD	6.50
22	7" FOOTED VASE	8.00	114	SEATED PUMA	12.00

ITEM	DESCRIPTION	PRICE	ITEM	DESCRIPTION	PRICE
OTHER GIFTWARE (ITEM #) CONTINUED:			OTHER GIFTWARE (BY ITEM #) CONTINUED:		
116	RECLINING PUMA	15.00	453	7" ARROWHEAD TRAY	8.00
118C	COMEDY MASK	9.00	459P	6" CANDY DISH	5.50
118T	TRAGEDY MASK	9.00	461	OKLAHOMA ASHTRAY	5.50
123	5 1/2" BOWL MAKER	12.00	463	4" MINI ARROWHEAD TRAY	3.00
133	6 1/2" BOOT VASE	7.50	473	7" SHELL TRAY	6.50
134	4" BOOT VASE	5.50	504	MINIATURE SUGAR	5.00
142	7 1/2" INDIAN CHIEF	12.00	553	MINIATURE CREAMER	5.00
167	3 1/2" HORSESHOE	4.00	6-131	5" INDIAN CHIEF	6.00
170	TURTLE PAPERWEIGHT	4.00	6-132	5" INDIAN MAIDEN	6.00
172	6 1/2" CYLINDER VASE	7.50	803	HONEY JAR /W LID	10.00
177	4 3/4" SWIRL PLANTER	5.00	803-L	LID ONLY	4.00
204A	DOGWOOD TRAY	5.50	809	9" EGG PLATE	19.00
208	12" MALLARD PLANTER	12.50	815	7" TABLE BELL	10.00
208A	9 1/2" MALLARD PLANTER	9.00	817	6" TABLE BELL	10.00
212	8" ROUND BOWL	7.00	818	12" LAZY SUSAN /W BALL	
212-2	6 1/2" ROUND BOWL	6.50		BEARING BASE	34.00
212-4	5" ROUND BOWL	5.00	819	12" EGG PLATE	25.00
218	12" SCALLOPED BOWL	13.50	833	24 OZ. PITCHER	7.00
222	CORNUCOPIA	15.00			6.70/12
224	8" ROUND BOWL	9.00	835	24 OZ. PITCHER	7.00
224-2	7 1/2" ROUND BOWL	8.50			6.70/12
224-3	6 1/2" ROUND BOWL	7.50	838	10 OZ. PITCHER	6.00
225	7" LEAF TRAY	6.00			5.70/12
226	11" LEAF TRAY	11.00	COLLECTABLES		
227	17" LEAF TRAY	25.00	CP92	CHRISTMAS PLATE 1992	19.00
228	8" SWAN PLANTER	10.00	DKY92	DONKEY MUG 1992	9.00
234	7 1/2" FREEFORM VASE	8.00	GOP92	ELEPHANT MUG 1992	9.00
235	6" FLOWER ARRANGER	8.00			
242	CORN HOLDER DISH	5.00			
245	2 QT. TURBEN /W LID	18.00			
245-L	LID ONLY	6.00			
245/W	2 QT. TURBEN /W WARMER	28.00			
246	3 QT. TURBEN /W LID	24.00			
246/W	3 QT. TURBEN /W WARMER	34.00			
247	SOUP LADLE	10.00			
249/B	SET OF 2 TACO HOLDERS	15.00			
250	WARM ROLLS TILE	5.00			
251	WARM BREAD TILE	5.00			
265-66	ROUTE 66 COASTER (HDI)	5.00			
265-FP	FRANKOMA COASTER (HDI)	5.00			
265-OK	OKLAHOMA COASTER (HDI)	5.00			
265P	3 1/2" COASTER	4.20			
		4.00/12			
266	TORTILLA SERVER	16.50			
		16.00/8			
272	4" CYLINDER VASE	5.00			
302	6" CANDLE VASE	7.00			
390	6" ELEPHANT PLANTER	7.00			
391	6" PIG PLANTER	7.00			
396	6" TURTLE PLANTER	7.00			
433	BOOT BOOKENDS	30.00			